

Newsletter - Turihaua Angus

**No. 20 ~ AUTUMN 2016**

**Paul & Sarah Williams**

Turihaua Station RD3 Gisborne

Phone: 64-6-868 6709

Fax: 64-6-868 4049

Mobile: 021 1894114

Email: [turihaua@gisborne.net.nz](mailto:turihaua@gisborne.net.nz)

Website: [www.turihaua.co.nz](http://www.turihaua.co.nz)

Hamish & Angela Williams Phone: 64-6-868 8421

Turihaua has been breeding Angus Cattle for over 100 years and one of its main selection criteria has always been phenotype. This has never changed. The other selection tools we now have available to us is a multitude of EBV figures for specific traits; the main ones being Calving Ease, Maternal, Fertility, Growth and Carcase Traits and DNA profiling for genetic gain. We are very mindful of the importance of these tools but believe they are a reflection of the genetic potential of any given animal and therefore should never be used without considering the phenotype and general structure of any animal.

## East Coast Angus Bull Walk

**Wednesday 27 April –  
Thursday 28 April**



A selection of the two year old sale bulls will be on display on Thursday 28 April, 10.45am – 11.15am. Some herd sires will also be on display, Turihaua Rex, Turihaua Break, Tangihau Highland 13 and Stern Balmoral 154, Alpine DoubleCharge 656

This is a great opportunity to see what bulls we have available for the June Sale.

Full itinerary available on AngusNZ  
[www.angusnz.com](http://www.angusnz.com)

**Lunch will be provided. ♦**

# Turihaua ANGUS



## Turihaua Legend H142

Turihaua Legend was retained from the 2014 sale group for his structural soundness quiet temperament and overall balance.

He is sired by Turihaua Liberation C27 who has bred consistently well for us and left some very sound fertile daughters.

His dam Turihaua E158 is a beautiful cow who continues to wean great calves.



*Turihaua Legend H142*



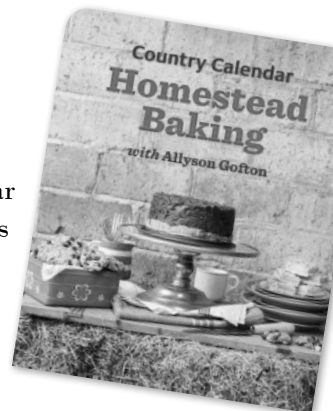
Legend is currently at Tararua Breeding Centre being collected for ourselves and for export to South America.

His first crop of bulls will be available at the September yearling sale. ♦

## Turihaua features in the latest Country Calendar cook book

Join Allyson as she visits New Zealand's high-country and rural homesteads, bringing their stories, recipes and baking secrets together in a new book based on programmes from the iconic Country Calendar television series, which celebrates its 50th year in 2016.

Country Calendar Homestead Baking is packed with recipes from past and present, glorious photographs and stories of a variety of farmsteads and their families.



**Its available from all good bookstores ♦**



[www.facebook.com/turihauaangus](https://www.facebook.com/turihauaangus)

# Field Day Beef and Lamb NZ Bull Bull Buying Workshop



Friday 22 April

10.00am – 3.00pm

Patrick Lanes, Whangara Angus. Waiomoko Rd,  
Whangara, Gisborne

Lunch supplied ◇

Targeted at the commercial bull buyer and facilitated by B+LNZ Genetics, this workshop is designed to help you make good decisions about bull buying so you add value to your farming system.

## Key steps covered:

- Setting a breeding objective.
- Choosing a bull breeder that matches that objective.
- Using genetic information to assess sale bulls.
- Using physical information to assess sale bulls.
- Settling your new purchase in and ensuring he is annually evaluated for breeding soundness.
- Day includes practical live cattle demonstrations and mock helmsman auction.



# Field Day Beef and Lamb Genetics Beef Progeny Test



Thursday 31 March

10am – 3.00pm

Whangara Farms. B5 Woolshed,  
Whangara, Gisborne

No Quads needed. Lunch provided ◇

This FieldDay is based on weaning and provides an opportunity to see which bulls performed across a variety of traits and environments.

## The day will focus on:

- Identifying sire groups by weaning weight
- Body condition score demo and comparison to weight of calf weaned
- Potential for synchronisation and AI use on commercial farms
- New traits and opportunities from the trial

Turihaua Liberation is one of the select sires used in the Progeny Test ◇

## South America Tour

Hamish and I are off to South America just after Easter. It will be a great opportunity to catch up with Angus Breeders we met at World Angus Forums and also a chance to see some Turihaua bred calves at a large stud and commercial operations in Argentina. These calves are by Turihaua Rex and Turihaua Liberation and they are excited that these genetics are crossing well with their own.

We will visit some very large commercial angus operations in Uruguay and visit stud breeders there as well. There is further opportunity to promote our genetics which are performing well and sought after in these countries. ◇

## How are your Bulls Performing?



We hope that all bulls have performed up to expectation and have done a great job getting cows and heifers in calf over the mating season. Please contact us if any issues arise.

We would also love to hear any good news, scanning results or stunning sires that you are excited about. ◇



# Turihaua Herd Sires



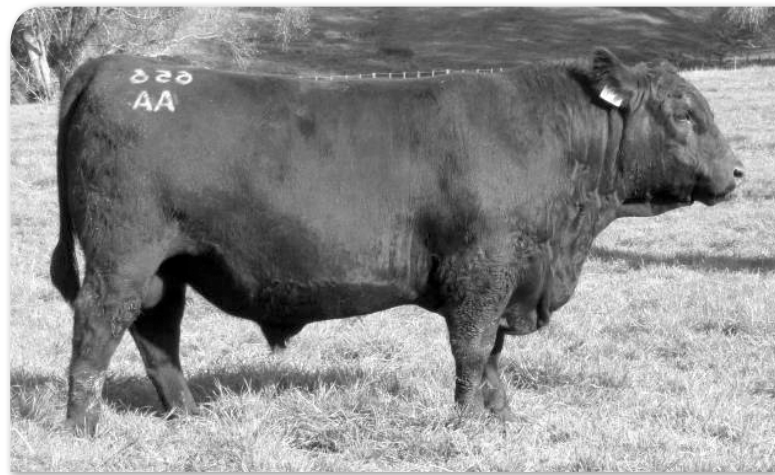
Turihaua Rex E297      **Sire:** Turihaua Texan B141      **Dam:** Turihaua B48



Turihaua Legend H142      **Sire:** Turihaua Liberation C27      **Dam:** Turihaua E158



Turihaua Break D92      **Sire:** Turihaua Crumble Y176      **Dam:** Turihaua U170



Alpine Double Charge 656      **Sire:** Alpine Double Charge 316      **Dam:** Alpine Legacy 429



Yard weaning bull calves in February

## 2015 Bull Sale Reviews

Bull Sales were exceptional in 2014 with a total clearance of 104 bulls across both the two year sale and the yearling sale. It is pleasing to know that the type of cattle we are producing are exactly what our clients are wanting for commercial breeding operations; sound functional fertile cattle that will survive beyond the 3 year guarantee we offer.

Turihaua topped the Yearling sale average from around the country by nearly \$2000.00 with an average of \$5128 across 28 bulls.

Bloodlines to attract the most attention at the June sale were the homebred sires, Crumble, Rex, Liberation, Universal and Herman. ♦

# Survival of the Fittest

“It is not the strongest or the most intelligent who will survive but those who can best manage change.” *Charles Darwin*

## Using Natural Selection for Genetic Gain

- The Turihaua herd has been moulded and refined for over one hundred years by allowing natural selection to occur from pressure from the environment.
- The program is based around using specific selection pressures to phase out the weak and allow the fittest to survive and become sires or replacements within the herd.
- We believe fertility and calf survival are key drivers of profit in a beef herd, and both are highly heritable. To achieve this yearling heifers are naturally mated for two cycles, and they must rear a decent calf in order to be put to the bull again. Anything dry is culled. The same method is applied to the mixed age cows. Generations of this system have ingrained fertility through the cow herd.
- The most important aspect of the program is measuring performance through environmental pressure. This is achieved

by yard weaning all 400 calves under the same conditions, then turning them out in two mobs of 200 (heifers and bulls). They are grazed in these large mobs on hill country, through the autumn and into winter when grass covers are at their lowest (no supplementary feed is given). This system allows us to cull under performers and only select animals that can compete and thrive under stress conditions. We are also believers that allowing weaners to graze out steep paddocks encourages them to become more efficient forages.

- Natural selection is also a useful tool to encourage parasite resilience within the cow herd. Weaner cattle are not drenched until a month after weaning, allowing them time to pick up a parasitic challenge and build up their own natural immunity. From then faecal egg samples are taken regularly to measure the degree of infection. Blanket drenching will only occur on the advice of a veterinarian when the health of the whole group is compromised. Animals showing ill thrift and poor performance will not be bred from.
- Buyers can be confident that any bulls sold have been through this selection process and they will naturally perform above expectation in any commercial environment. ♦

# A Bull Buyers Guide

With the bull buying season upon us here are some important questions to ask your bull breeder before buying a bull.

After considering management and environmental factors, the bull breeder’s herd must be out performing your herd to ensure genetic gain. ♦

We have answered it ourselves so you can compare.

- Are the bulls from a TB accredited herd? .....
- Have the bulls been tested for BVD and Vaccinated? .....
- Have the bulls been checked for breeding soundness by a vet? .....
- Have the bulls been service capacity or service capability tested? .....
- On what class of country have the bulls been born and raised? .....
- Have the bulls been raised in a commercially focused farming environment? .....
- What is the stocking rate on the farm? .....
- Are yearling heifers mated? .....
- What is the average in calf rate (including yearling heifers) for the herd? .....
- For how many cycles are the cows/heifers exposed to the bull? .....
- Does the herd have a history of good conformation and structural soundness? .....
- What supplements have the bulls received? .....
- What type of bull guarantee does the breeder provide? .....

Turihaua
Yes
Yes
Yes
Yes
Medium/Steep
Yes
9.1 su/ha
Yes
93 %
2
Yes
Meadow Hay
3 years



# Beef Evaluation Unit Bulls



We have two bulls at the BEU this year. They will be for sale at Beef Expo, Feilding Tuesday 17 May

## Turihaua K31

K31 is a very well balanced son of Turihaua Liberation. He is thick and deep with excellent feet and legs. His dam Turihaua Z103 is a high volume cow with 9 natural calves and 3 ET calves.

Turihaua K31      Sire: Turihaua Liberation C2      Dam: Turihaua Z103      DOB: 17/07/14

### March 2016 Angus BREEDPLAN EBVs

	Calving Ease DIR	Calving Ease DTRS	Gestation Length	Birth Wt.	200 Day Wt	400 Day Wt	600 Day Wt	Mat Cow Wt	Milk	Scrotal Size	Carcase Wt	Eye Muscle Area	Rib	Rump	Retail Beef Yield	IMF
EBV	+1.9	+0.9	-2.4	+3.5	+24	+53	+75	+66	+7	+2.0	+21	+0.2	-0.2	-0.5	+0.3	-0.4

## Turihaua K41

K41 is a powerful bull sired by Turihaua Foreman. Foreman has left a beautiful line of daughters in the Turihaua herd. K41 is very sound with an excellent temperament. His dam Turihaua U35 is a traditional cow with plenty of fertility having 13 natural calves and 13 ET calves.

Turihaua K41      Sire: Turihaua Foreman B235      Dam: Turihaua U35      DOB: 19/07/14

### March 2016 Angus BREEDPLAN EBVs

	Calving Ease DIR	Calving Ease DTRS	Gestation Length	Birth Wt.	200 Day Wt	400 Day Wt	600 Day Wt	Mat Cow Wt	Milk	Scrotal Size	Carcase Wt	Eye Muscle Area	Rib	Rump	Retail Beef Yield	IMF
EBV	-7.1	-3.5	-0.6	+6.5	+35	+67	+92	+97	+4	+1.5	+38	+0.1	-0.6	-0.7	+1.2	-0.9



## Photo's, photo's, photo's...

...of Turihaua bred cattle...of individual Turihaua bulls you rate

We would love to build a database of photographs of the Turihaua bred cattle on your farms. Any shots of mobs of heifers, cows, steers would be great. Scenic shots with cattle in them would also be great.

Also any shots of individual bulls that you rate.

Best shots will go in a draw to be in the 2017 Turihaua Annual Calendar. **Quality needs to be pretty sharp.**

Photos can be emailed to us; [turihaua@gisborne.net.nz](mailto:turihaua@gisborne.net.nz)

If you have more than one please send them through no more than 3 at a time.

**Turihaua**ANGUS  
Simply the best



2016 YEARLING SALE  
Wednesday 21 September - 1.00pm

SELLING UP TO 30 BULLS

[www.turihaua.co.nz](http://www.turihaua.co.nz)

# SURVIVAL OF THE FITTEST

“It is not the strongest or the most intelligent who will survive but those who can best manage change.”

CHARLES DARWIN



*Turihaua Rex E297*

PHOTO COURTESY OF FRANK SCHWERE

**Turihaua cattle are TESTED under strict commercial conditions for commercial environments**

• **Annual Sale** - Tuesday 28 June 2016 • **Yearling Sale** - Wednesday 21 September 2016

**Turihaua**ANGUS



**Paul & Sarah Williams**

Telephone: 64 6 868 6709

Email: [turihaua@gisborne.net.nz](mailto:turihaua@gisborne.net.nz)

[www.turihaua.co.nz](http://www.turihaua.co.nz)

**Hamish & Angela Williams**

Telephone: 64 6 868 8421

See why you should be using Turihaua Genetics by scanning this QR code

